

CPTD PLAN GENERAL NOTES:

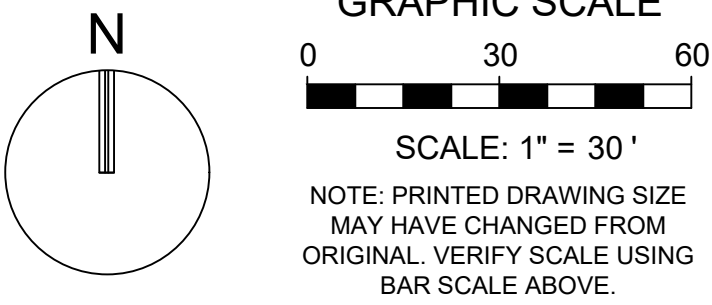
1. CPTD & SECURITY STRENGTHENING CONDITIONS REQUIRED FOR APPROVAL MUST EACH BE INCLUDED AND DESCRIBED IN DETAIL ON THE NARRATIVE AND DRAWING PLANS. ALSO, DEVELOPER AND/ OR LEGAL AGENT MUST INITIAL EACH INDIVIDUAL LISTED ITEM DECLARING ACKNOWLEDGEMENT AND COMPLIANCE.
2. EACH AND ALL OF THE CPTD SECURITY STRENGTHENING NARRATIVE PLAN CONDITIONS ARE PART OF AND INTEGRAL TO THE APPROVED DEVELOPMENT PLANS AND MUST BE COMPLETED FOR PROJECT APPROVAL.
3. THE SERVICES OF AN INDEPENDENT, AND HIGHLY EXPERIENCED, QUALIFIED, AND CERTIFIED SECURITY CRIME PREVENTION/ CPTD CONSULTANT ARE HIGHLY RECOMMENDED TO ACHIEVE AND MAINTAIN OBJECTIVE CREDIBLE SECURITY REVIEW INTEGRITY, AND TO EXPEDITE PROCESSING.
4. THIS SAFETY AND SECURITY REVIEW DOES NOT GUARANTEE A CRIME WILL NEVER OCCUR; IT IS AN EFFORT TO MITIGATE OPPORTUNITIES FOR CRIME AND TO HELP AVOID ANY PRESENT AND FUTURE SECURITY DEFICIENCIES, CONFLICTS, THREATS, BREACHES, OR LIABILITIES THAT MIGHT OCCUR WITHOUT ANY REVIEW.
5. IF THESE SECURITY STRENGTHENING AND CPTD DRAWING AND

- NARRATIVE PLANS ARE A RESUBMITTAL, YOU MAY INCLUDE 'COMMENT RESPONSES' TO CONDITIONS, BUT YOU MUST ABSOLUTELY INCLUDE YOUR RESPONSES ONTO BOTH THE ACTUAL DRAWING AND NARRATIVE PLANS.
6. PLEASE NOTE THAT ALL COMMENTS MADE BY THE BROWARD SHERIFF'S OFFICE REGARDING YOUR PLAN ARE PRELIMINARY ONLY, AS ADDITIONAL SECURITY STRENGTHENING AND CPTD ATTRIBUTES MAY BE REQUIRED AS DEVELOPMENT PROGRESSES.
  7. AS PER CODE 155.2407.E.9., AT THE TIME OF PERMIT SUBMITTAL, THE CPTD SECURITY STRENGTHENING DRAWING PLAN AND SEPARATE CPTD SECURITY STRENGTHENING DRAWING PLAN NARRATIVE SHALL BOTH BE SUBMITTED AS PART OF THE REQUIREMENTS FOR PLANNING & ZONING REVIEW AND APPROVAL.
  8. PLEASE REFER TO SHEET SP-202 AND SP-203 FOR A COMPLETE LIST OF CPTD NOTES AND NARRATIVE.

CONFIDENTIAL

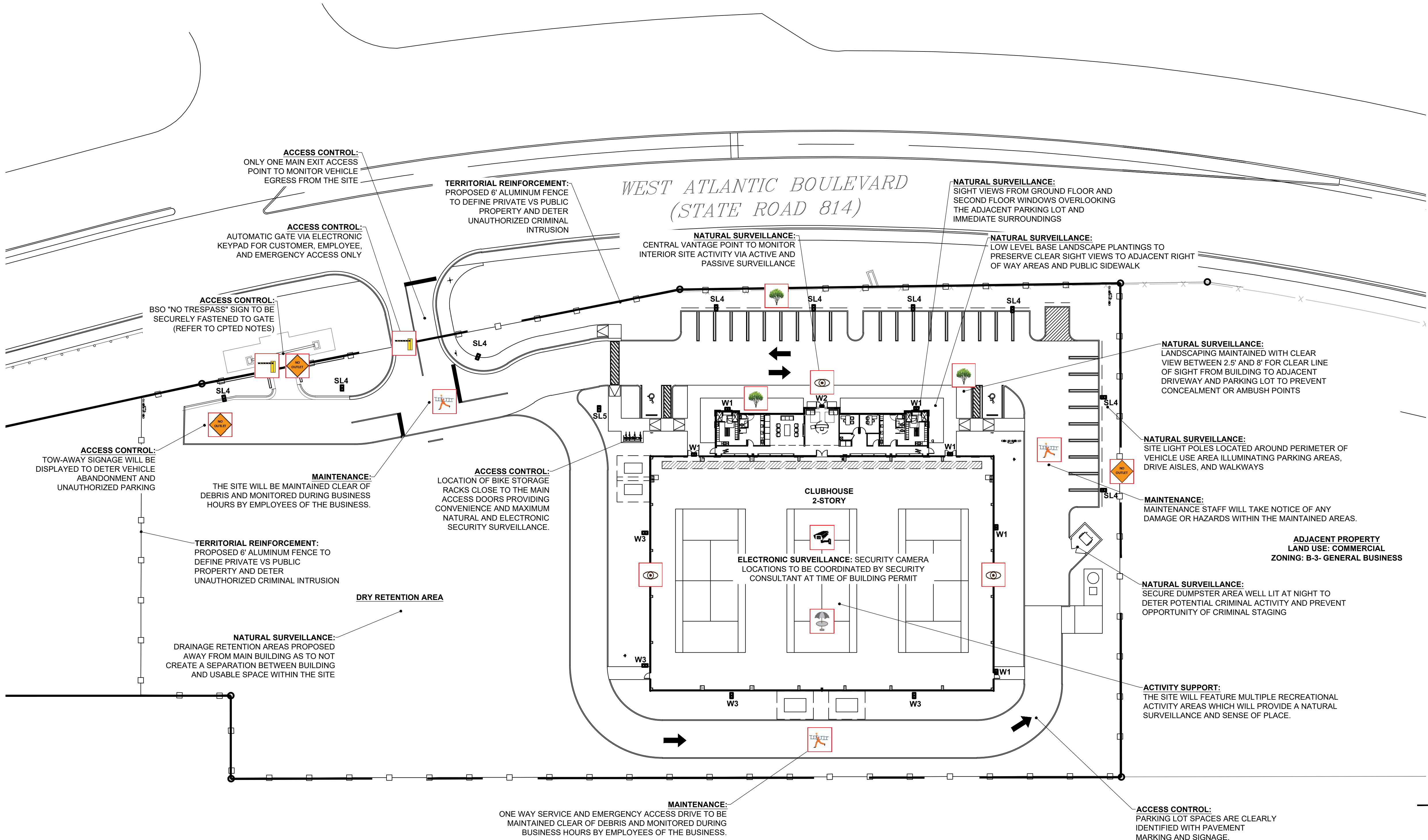
LEGEND:

- M: MAINTENANCE
- ACN: ACCESS CONTROL- NATURAL
- TR: TERRITORIAL REINFORCEMENT
- SE: SURVEILLANCE- NATURAL
- SE: SURVEILLANCE- ELECTRONIC
- AS:ACTIVITY SUPPORT
- ACP: ACCESS CONTROL - PHYSICAL
- TR: TERRITORIAL REINFORCEMENT



REVISIONS	
1.	PER DRC COMMENTS 07/18/2024
2.	PER DRC COMMENTS 12/19/2024
3.	PER DRC COMMENTS 03/03/2025
4.	
5.	
6.	
7.	
8.	
9.	
10.	

ALL IDEAS, DESIGN, ARRANGEMENTS, AND PLANS INDICATED OR REPRESENTED BY THIS DRAWING ARE OWNED BY AND PROPERTY OF THE OFFICE, AND WHILE CREATED, ENVELOPED, AND DEVELOPED FOR THE USE OF, AND IN CONNECTION WITH THE SPECIFIED PROJECT, NONE OF SUCH IDEAS, DESIGN, ARRANGEMENTS, AND PLANS SHALL BE USED BY, OR DISCLOSED TO ANY PERSON, FIRM, OR CORPORATION FOR ANY PURPOSE WITHOUT WRITTEN PERMISSION OF RWB LINARES ARCHITECTURE, INC.



FLORIDA INDOOR TENNIS  
POMPAHO BEACH, FL 33069

3000 NORTH MILITARY TRAIL, SUITE 209  
BOCA RATON, FLORIDA 33431  
PHONE 561-391-0081 FAX 561-391-0085  
EMAIL mail@rwb-arch.com

RWB  
Linare  
ARCHITECTURE

PROJECT # 21-0435  
DATE PER ISSUANCE  
SHEET # SP-201

CPTD PLAN

P&Z

THOMAS F. DONAHUE, P.E.  
FLORIDA REG. NO. 60529  
(FOR THE FIRM)

PZ23-12000009

03/05/2025